

Zea mays L.

*
**

*) (R.C.B.D.) (Control) : () % 50 %30)

(T5 T4 T3 T2) :
40 - 0 20 - 0 30 - 0

) (Atmometer) (K_y) (K_c)

(K_c) % 7.5 10.7 11.8 6.0

0.13 0.42 1.96 0.32 (K_y)

) (¹⁻ 7332) % 99 - 96

Epperson

.(2002) Nielsen (1993)

(1996 Annac 1996 Itter)

Prieto

(2000) Annandale (1996) Angueira

(2009) (1996) Kirda

.(2002)

2010

—

(2010)

Zea mays L Corn 106

3.5

150

° 22.6

% 44

(1) . (1986 Klute 1982 page)

33 0

(Core sampler)

1500 1000 500 100

1500 33

(pH)

(EC_e)

:

0.01 (EDTA)

(Flame photometer)

0.01

. (1982 Doner Adraino) 0.05 (AgNO₃)

.1

257	(¹⁻ .)
408	(¹⁻ .)
335	(¹⁻ .)
1.36	(³⁻ .)
0.38	(³ / ³) 33
0.11	(³ / ³) 1500
4.8	(¹⁻ .)
7.6	(pH)
5.4	/ EC
274	(¹⁻ .)
2.3	(¹⁻ .)
2.2	(¹⁻ .)
2.1	(¹⁻ .)
1.7	(¹⁻ .)
1.9	(¹⁻ .)

(R.C.B.D.)

) 4-3 2010 / 8 / 1 106
 0.75
 200 : 1- 400 0.25 (1- 260)
 .Sesamia Cretica Led. % 10
 . 2010 / 12 / 6
 :(T2) () :(T1)
) :(T3) (%30)
 : (T4) (%30)
 : (T5) (%30)
 (%30)
 1
 30 -0 (Monometer)
 40 - 0 20 - 0

(100-80) (80-60) (60-40) (40-20) (20 -0)

$$d [\theta_{F.c} - \theta_{bi}] D \text{-----} (1)$$

() = d
 = O_{fc}
 = O_{bi}
 () = D

$$(I + P + C) - (ET_a + D + R) = \pm \Delta S \text{-----} (2)$$

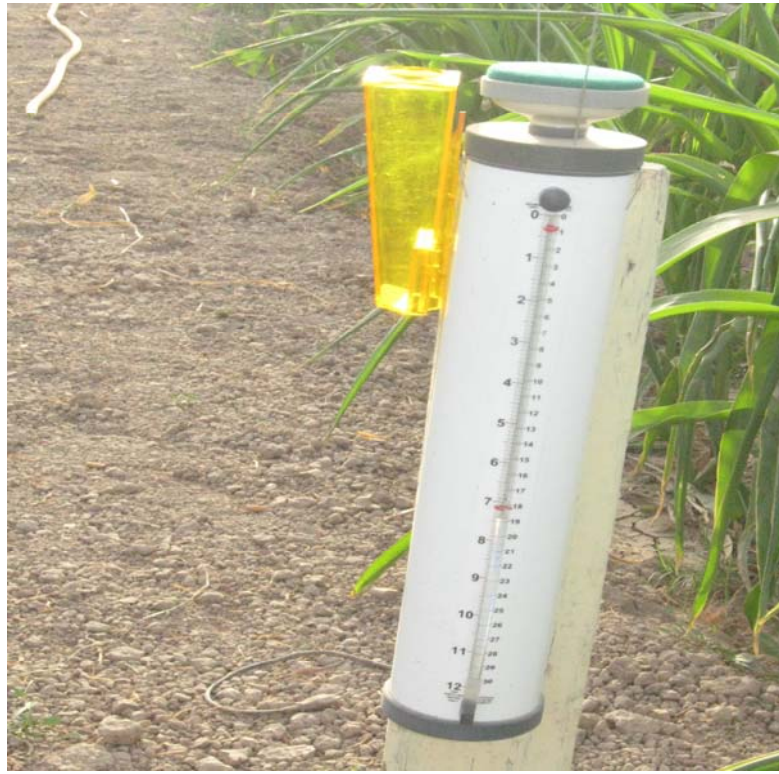
() = I
 () = P
 () = C
 () - = ET_a
 () = D
 () = R
 = SΔ

$$ET_a = (St_1 - St_2) + C - D \text{-----} (3)$$

() = St₁
 () = St₂
 (ET_o) - (Atmometer)
 . (1)
 : (1998 Allen)

$$ET_a = K_c * ET_o \text{-----} (4)$$

() = ET_o
 () = ET_a
 = K_c



. (Atmometer) .1

. (1977 Stewart)

$$k_y = [1 - (Y_a / Y_m)] / [1 - (ET_a / ET_m)] \text{ -----(5)}$$

() = K_y
 () = Y_a
 () = Y_m
 () = ET_a
 () = ET_m

. (1990)

$$LSA = 0.65(L)^2 \text{ -----(6)}$$

() = LSA
 () () = L

. (1985) Singh Saxena

$$LAI = \frac{LSA}{AE} \text{ -----(7)}$$

2010 / 12 / 6

:

(35 %) . 1

. 2

% 15

() . 3

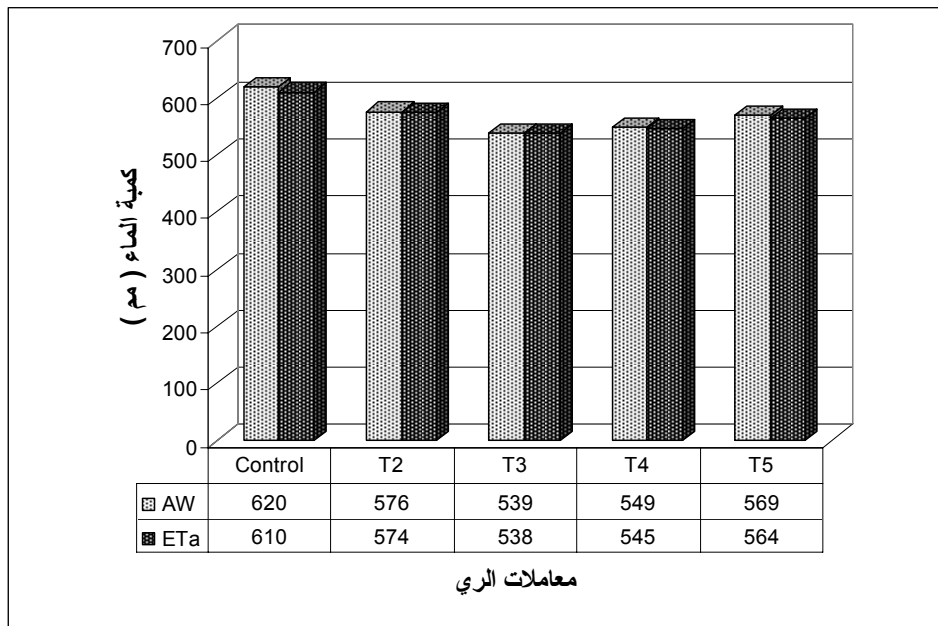
0 65

(AW) (ET_a) (1)
(ET_a) ()

574 - 538 / 610

% 8 11 12 6

(1986 William)



(ET_a)

(AW)

.1

Wedsoft (1996)

Boldt (1994) Al-Hadi
(2002) (2000) Heinigre (2006)

(1982 Al-Hassani Al-Abu-Khalid) 900 - 850

576 – 539

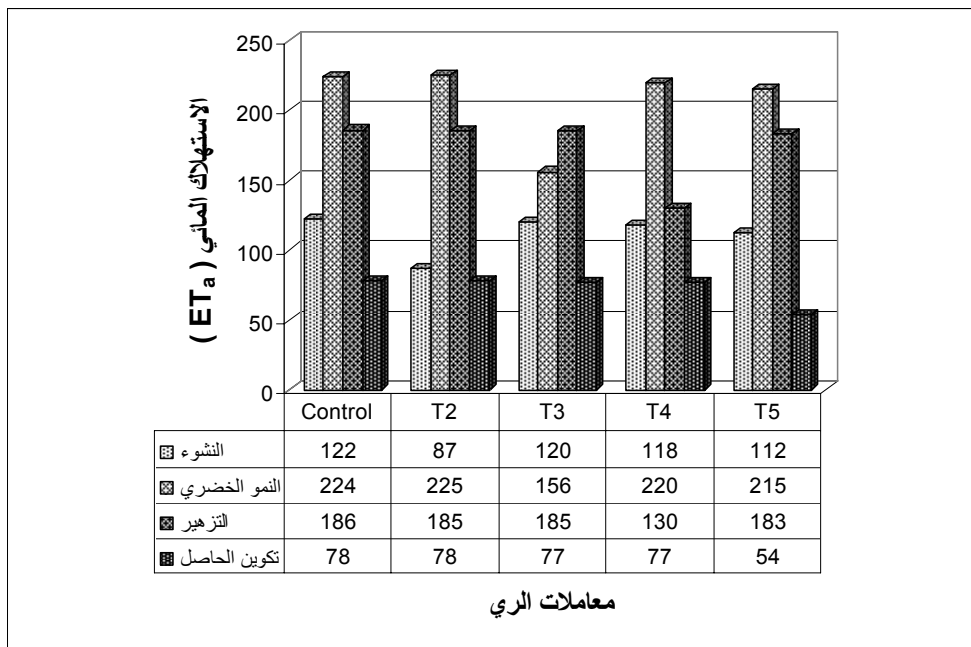
620

(AW)

(ET_a) . % 12 – 6 ()
(AW)

(2)

(2)



معاملات الري

(ET_a)

.2

31

% 36.7

% 20

% 12.8

%

% 39-29

% 22-15

% 13-10

% 32-24

() .

(2005) Melvin (1996) Kirda (2002)

Lauer % 25 (2009) Najy (1980) Fereres Faci (2003)

(2000 Moutonnet)

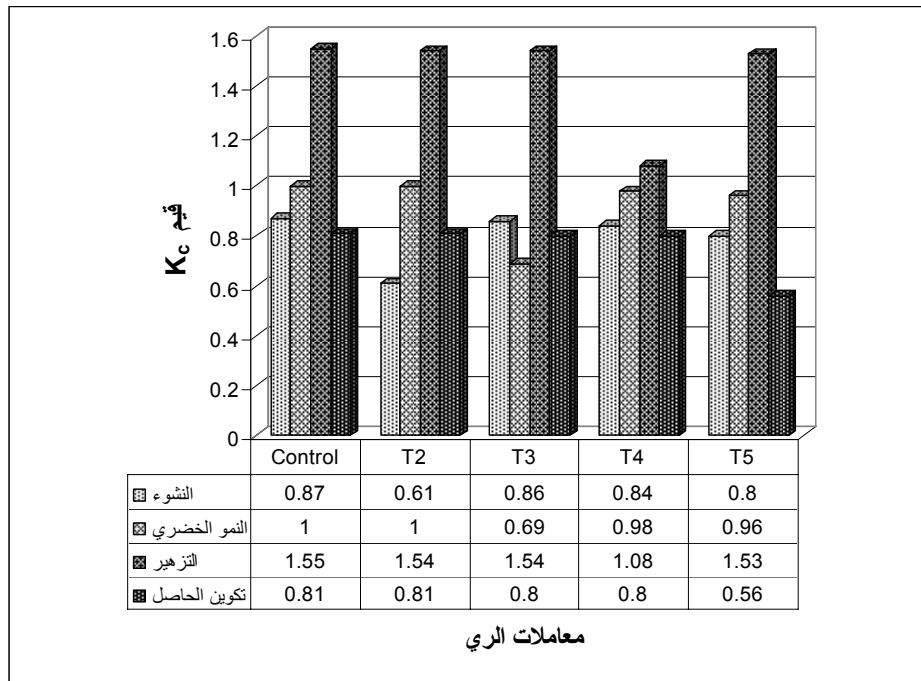
(3) 1.55 0.81 (K_c)

()

(2002) Seglar Mahanna (2000) Heinigre
(1986) Kassam Doorenbos

Pessarakli)

(1999)



معاملات الري

(K_c)

.3

$$1 - (ET_a / ET_m)$$

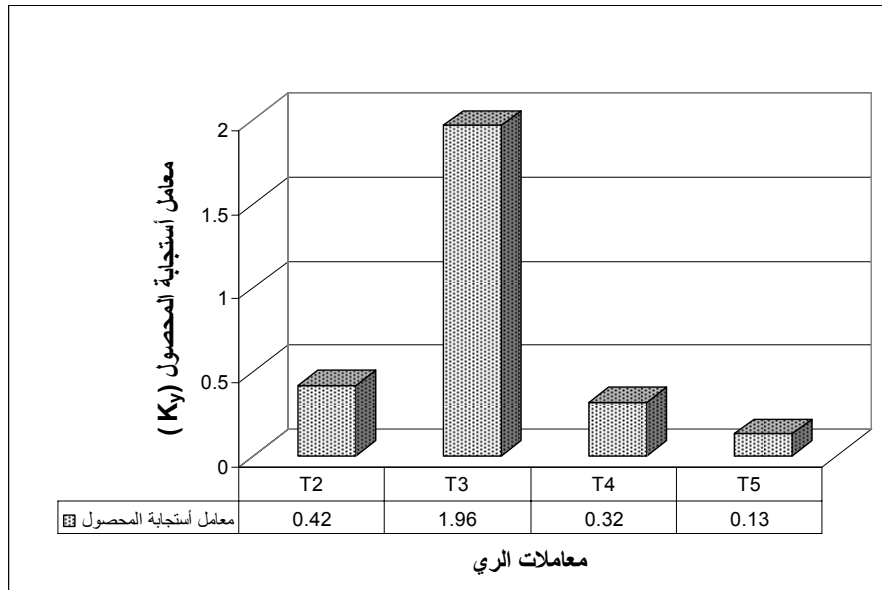
(K_y)

(1.96)

$$1 - (Y_a / Y_m)$$

(4)

(5)



(K_y)

.4

<

<

<

(K_y)

. (1999 Kanber Kird) ET

. (1979 Hsiao)

(2009) Najy (1983) Eastin (1982)

Tarantino

(2)

171) ()

(

. (143)

()

. (1973 Hsiao)

(2002) Huang (1996) Ottman (1986) Eck

(² 6038)

(LAI)

(LSA)

(3.22)

12.3) (% 11.8 11.0 11.3 12.1)

(% 11.8 11.0 11.3

(1970) Boyer .

(2006) .

()
(%18.0 14.0 16.0 18.0)2) ()
. (

. 1- . 7697

Sanchez-Diaz Antolin)

. (1993)
(1982) Abdelmajid (1984) Dennis
(1998) El-Nadi Saeed
(2). 7332) % 99 - 96
(1996) Kirda .(1-
% 34

(1999) Ramachandrappa Leta .

Eck . (1- . 5632)
(1986)
(2006) Payero (1988) Unger .

Mahanna .

(2002) Seglar

Henry (2009) Najy .
(2009) Sajedi (2007) Jinfeny Wang (2008)

. 2

(¹ - .)	(¹ - .)		(²)	()	
7332	7697	3.67	6872	171	T1
7143	7480	3.63	6807	170	T2
5632	6308	3.22	6038	144	T3
7074	7341	3.62	6788	169	T4
7288	7647	3.65	6844	171	T5
344	496	0.11	193	5.2	LSD _{0.05}

.2002 .

. 1987 .

[*Sorghum bicolor* (L.) Moench]

.2006 .

. 2002 .

(*Zea mays* L.)

(72-50). 2002

. 2009 .

. 182-174 (14) (2)

Abdelmajid, E. A., M. A. Mustafa, and I. Ayed. 1982. Effect of irrigation interval, urea and gypsum on N, P. and uptake by forage sorghum on highly saline sodic clay. Exp. Agric. 18: 177-182.

Abou-Khalid, A. and K. Al-Hassani. 1982. Evaporation and potential evapotranspiration under the arid conditions of central Iraq. SOLR. Field Document. No. 32

Adriano, D.C., and H.E. Doner. 1982. Bromine, Chloride and fluorine .
In A.I. pag et al;(eds) Methods of soil analysis, Agronomy No.g, .

- Al-Hadi , S. S. 1994 . Effect of different soil moisture contents on Barely water consumptive use . Dirasat 5 : 119-131 .
- Allen , R. G., Pereira , D. Raes , M. Smith . 1998 . Crop evapotranspiration : guidelines for computing crop water requirements . FAO Irrigation and Drainage Paper No. 56. Rome, Italy.FAO.
- Annac , M.S., M. Ali Ul., I.H. Tuzel and D. Anac . 1996 . Optimum irrigation schedules for cotton under deficit irrigation conditions. In: Nuclear Technique to Assess Irrigation schedules for Field Crop, pp.225-241,IAEA TECDOC-888,Vienna.
- Annandale ,J.G.,G,S.Campbell., F.C. Olivierand N.Z. Jovanovic .2000. redicting crop water uptake under full and deficit irrigation : An example using pea (*Pisum sativum L. cv. Puget*). Irrig.Sci. 19: 65-72
- Antolin, M. C and M. Sanchez-Diaz . 1993 . Effect of temporary droughts on photosynthesis of alfalfa plants . J.Exp.Bot.44: 1341-1349
- Bayrak, F. 1979 . Water consumption of maize under Bafra condition. Research Institute of samsum. General publ. No.15 .
- Boldt, A. L., D. E. Eisenhauer, D. L. Martin, and G. J. Wilmes. 1996. Irrigation water conservation practices for the central PLATTE VALLEY, Nebraska. Ecosystem proceeding paper.
- Boyer, J. S. 1970. Leaf enlargement and metabolic rates in corn, soybean and sunflower at various leaf water potentials. Plant Physiol. 46: 233- 235
- Dennis, P. G., Y. S. Charles, and G. W. Darrell. 1984. Changes in grain sorghum stomatal and photosynthetic response to moisture stress across growth stages. Crop Sci. 24: 441-446.
- Doorenbos, J.and Kassam, A. H. 1986. Yield response to water, FAO, Irrigation And Drainage paper 33, FAO, Rome, Italy.
- Eastin, J. D., R. M. Castelberry ., T. J. Gerik., J. H. Hultquist., V. Mahalakshmi., V. B. Ogunlela./ and J. R. Rice . 1983 . physiological aspects of high temperature and water stress . In: C. D. Raper., and P. J. Kramer (ed) . Croption Reaction to Water and Temperature .
- Eck, H. V. 1986. Effect of water deficits on yield, yield components, and water use efficiency of irrigation corn. Agron. J. 78: 1035 – 1040.
- Epperson, J.E.Hook and Y.Mustafa.1993. Dynamic programming for improving irrigation scheduling strategies of maize .
- Faci, J. M ., and E. Fereres . 1980 . Response of grain sorghum to variable water supply under two irrigation frequencies . *Irrigation Science* No: 1, 149-159 .
- Farre, I., and J.M. Faci. 2006 . Comparative response of maize (*Zea mays L.*) and sorghum (*Sorghum bicolour L. Moench*) to deficit irrigation in a Mediterranean environment . Agricultural Water Management .

- Heingre, R. W. 2000 . Irrigation and Drought Management . Crop Science Department . URL : <http://www.ces.ncsu.edu/plymouth/cropsci/cornguide/Chapter4.html>
- Henry , H . Igbadun.Baanda A. Salim . Andrew ,K.P.R.Tarimo.Henry and F.Mahoo. 2008 . Effects of deficit irrigation scheduling on yields and soil water balance of irrigated maize .Irrig Sci 27: 11-23 .
- Hsiao, T. C. 1979 . Plant response to water stress . Ann.Rev.Plant Physiol. 24: 519-570.
- Huang, M., L. Zhong and J. Gallichand.2002. Irrigation treatments for corn with limited water supply in the loess Plateau,China.Canadian Biosystems Engineering.Volume 44, P:129-134.
- Itter,B.,F.Maraux,P.Ruelle, and J.M.Deumier.1996.Applicability and limitations of irrigation scheduling methods and techniques.In: Irrigation Scheduling : from theory to Practice ,Proceeding ICIDL\FAO Workshop,Sep .1995 , Rome.Water Report No.8,FAO,Rome.
- Jinfeng Wang , Shaozhong Kang , Fusheng Li , Fucang Zhang , Zhijum Li and Jianhua Zhang . 2008 . Effects of alternate partial root-zone irrigation on soil microorganism and maize growth . *Plant Sci.* 302 : 45-52 .
- Kang,S., Z. Liang., Y. Pan., P.Shi and J. Zhang.2000. Alternate furrow irrigation for maize production in an arid area . *Agricultural Water Management* 45 , 267-274 .
- Kirda, C., R. Kanber and K. Tulucu. 1996. Yield response of cotton, maize, soybean, sugarbeet, sunflower and wheat to deficit irrigation- In nuclear techniques to assess irrigation schedules for field crops. IAEA. TECDOC. 888: 131-138.
- Kirda, C. and R. Kanber . 1999 . Water , no longer a plentiful resource should be used sparingly in irrigated agriculture .In: C.Kirda,P.Moutonnet, C.Hera, and D.R.Nielson (eds). Crop Yield Response to Deficit Irrigation .Dordrecht,The Netherlands ,Kluwer ,Academic Publishers.
- Klute,A.,R.C.Dinauer,D.R.Buxton,and J.J.Mortvedt .1986.Methods of Soil Analysis,(Agron.99part 1),Madison,Wisconsin,USA.
- Lauer, J . 2003 . What happens within the corn plant when drought occurs University of Wisconsin Extension . <http://www.uwex.edu/ces/ag/issues/drought2003/corneffect.html>.
- Leta ,T. and B.K. Ramachandrappa . 1999 . Response of maize to moisture stress at different growth stages in alfisols during summer. *Mysore Journal of Agricultural Sciences.* 32 (3) :201-207 .
- Mahanna, B., and B. Seglar . 2002 . Pioneer management information.A management and utilization guide for drought-stressed crops. Pioneer Hibred, URL : Management-corn.htm

- <http://www.pioneer.com/flashdrought->
- Melvin, S.R., J.O. Payero., N.L. Klockhe and J.P. Schneekloth . 2005 .
Irrigation management Strategies for Corn to Conserve Water ,
p.76-83. proceedings of the 17th Annual central plains Irrigation
Conference and Exposition .
- Moutonnet, P. 2000 . Yields , response factors of field crops to deficit
irrigation .Deficit irrigation practices ,FAO.IAEA,joint FAO/IAEA
division , Vienna,Austria .
- Najy, Aram Sameer . 2009. Response of corn (*Zea mays* L.) to deficit
irrigation at different growth stges. A thesis of master.College of
Agriculture. Al-Sulaimani university.
- Nielsen, R.L. 2002 . Drought and heat stress effects on corn pollination
.Purdue Coop.Ext.Ser.URL:
[http:// www.agry.purdue.edu/ext/corn/pubs/corn-07.htm](http://www.agry.purdue.edu/ext/corn/pubs/corn-07.htm).
- Ottman, MJ., B.R. Tickes., R.L .Roth. 1996 . Alfalfa yield and stand
response to irrigation termination in an arid environment
Agronomy Journal 88: 44-48 .
- Page,A.I.,R.H.Miller,and D.R.Keeney.1982.Methods of Soil Analysis.
part2,Chemical and Microbiological.
properties, 2nd. Edition,Agronomy9,Am.Soc.Agron.,Inc,soil
Sci.Soc.Am.Inv.,Madison,WI,USA
- Payero,J.O., D.Tarkalson., and S.Irmak . 2006 . Corn yield response to
different irrigation depths with subsurface drip irrigation
,Annual meeting of the ASCE-EWRI,Omaha,Nebraska .
- Pessaraki , M. 1999 . Handbook of plant and crop stress .Pub : Marcel Dekker.
Page 1256 .
- Prieto,D and C.Angueira.1996. Water stress effect on different
growing stages for cotton and its influence on yield reduction.In:
Nuclear Techniques to Assess Irrigation Scheduling for Field
crops.IAEA,TECDOC 888,pp.13-32,Vienna.
- Saeed , A .M and A . H . El- Nadi . 1998 . Irrigation effects on growth , yield
and water use efficiency of alfalfa . *Irrig.Sci.*17:63-67 .
- Sajedi , N.,A. Ardakani.,A. Naderi., H.Madani and M. Mashhadi . 2009 .
Response of maize to nutrients foliar application under water
deficit stress conditions . *American Journal of Agricultural and
Biological Science* 4 (3): 242-248,2009 .
- Saxena , M.C.and Singh , L. 1985.A note on leaf area estimation of
intact maize leaf . *Indian J . Agron.* 10 : 457-459 .
- Smith , M. 1992 . Cropwat. A computer for irrigation planning and
management. FAO Irrigation and Drainage . Paper 46,Rome,Italy
- Stewart, J. I., R. H. Cuenca., W. O. Pruitt., R. M. Hagan and J. Tosse.
1977. Determination and utilization of water production

- functions for principal California crops. W-67. Calif. Contrib. ProjRep. University of California Davis.
- Tarantino, E., H. Singh., and W.O. Pruitt . 1982 . The microclimate and evapotranspiration of processing tomatoes under drip and furrow irrigation . Rivistadi Agronomia, 16(1): 21-29 .
- Unger, P.W. 1988 . Grain and forage sorghum production with no – tillage on dryland .Agron.J.80: 193-197 .
- Weedsoft . 2006 . Corn Growth Stage development . URL: <http://weedsoft.unl.edu/documents/GrowthStageModule/Corn/Corn.htm>.
- William, R., W.R. Kneebone, and I.L. Pepper . 1986 . Consumptive water use by subirrigation turfgrass under desert conditions . *J.Agric. Water Resour.* 5: 201-219 .
- Zhu H., Y.Lan., M.Lamb and C.Butts . 2007 . Corn Nutritional properties and yield with Surface Drip Irrigation in Topographically Variable fields.Agricultural Engineering International : the CIGRE Journal.Manuscript LW07 005 .Vol.IX .

RESPONSE OF CORN (*Zea mays* L.) TO DEFICIT IRRIGATION AT DIFFERENT GROWTH STAGES.

A . Sh . Falih *

A . Th . Salih **

* Ministry of Science & Technology

** Agriculture College - University of Baghdad

ABSTRACT

The main objectives of this study were to detect the response of corn to deficit irrigation practices at different growth stages of the crop , and to determine the crop water requirements under middle of Iraq conditions (Baghdad). Randomized Complete Block Design (R.C.B.D.) with three replications was applied to analyzed data. Corn was grown under five irrigation treatments . A control treatment(no water reduction) and four deficit irrigation treatments (reduction 30 % from applied water irrigation to the control treatment (Full irrigation) at main growth stages : (seedling T2 , vegetative growth T3 , flowering T4 and seed maturity T5). The amount of irrigation water required was estimated based on measurement of soil water content by using gravimetric method , to moistening the 0-20 cm from planting up to the vegetation stage , 0-30cm from vegetation stage to the flowering, and 0-40cm from flowering stage up to the end of the growing season. Actual evapotranspiration was estimated by measuring the soil water content after each irrigation and before the next irrigation during the entire growing season. Reference evapotranspiration was estimated from atmometer gauge . Crop factor (K_c) , yield response factor (k_y) , plant height , leaf surface area , leaf area index , dry matter , grain yield were estimated. The result showed that The reduction in actual evapotranspiration for deficit irrigation treatments were

6.0 , 11.8 , 10.7 and 7.5 % at seedling , vegetative growth , flowering and seed maturity ,respectively in comparison to full irrigation treatment . In general , K_c values increased with progress of season, and reached to highest value at flowering stage , then decreased at seed maturity . On other hand , found same behavior in deficit irrigation treatments with notice decreasing value of factor at growth stage that subjected to water stress . The crop response factor (K_y) was affected by deficit irrigation . The K_y values were 0.42 , 1.96 , 0.32 and 0.13 for deficit irrigation at seedling , vegetation growth , flowering and seed maturity stages, respectively. This means that the vegetative growth stage is more sensitive to deficit irrigation than other stages . There is no significant differences in grain yield between the control treatment and deficit irrigation treatments at seedling , flowering and seed maturing stages , their relative yield reached 96-99 % from control treatment This result pointed that stages are low sensitive to water stress . The other plant properties were take similar pattern of those for the grain yield .

Key words: Corn , deficit irrigation .