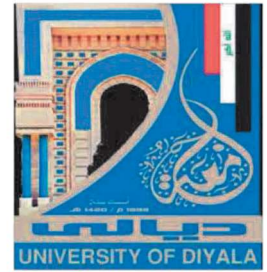


**Ministry of Higher Education  
And Scientific Research  
University of Diyala  
College of Engineering**



# **ANALYSIS OF MASONRY BUILDINGS EXPOSED TO EARTHQUAKE WITHIN IRAQI ZONES**

**A Thesis Submitted to Council of College of Engineering,  
University of Diyala in Partial Fulfillment of the Requirements  
for the Degree of Master of Science in Civil Engineering**

**By**

**Maan Hatam Saeed**

**(B.Sc. in Civil Engineering, 1998)**

**Supervised by**

**Assist. Prof. Dr. Ali Laftah Abbas**

**September, 2017**

**IRAQ**

**Thul Hijjah 1438**

بِسْمِ اللَّهِ الرَّحْمَنِ الرَّحِيمِ

وَإِذْ نَادَىٰ مِيقَاتِ الْغَيْثِ اللَّهُ يَعْلَمُ إِنَّا فَجَاءَكُمْ الْبُرْقُوقُ وَالْبَحْرُومُ وَالنَّوْطُومُ وَالرَّافِقُومُ  
اللَّهُ يَعْلَمُ إِنَّا فَجَاءَكُمْ ظِلْمَاتُ الْوَيْحِ وَاللَّيْظُومُ وَاللَّيْظُومُ وَاللَّيْظُومُ وَاللَّيْظُومُ وَاللَّيْظُومُ وَاللَّيْظُومُ  
اللَّهُ يَعْلَمُ إِنَّا فَجَاءَكُمْ كَيْفَ الْبَيْتِ وَاللَّيْظُومُ وَاللَّيْظُومُ وَاللَّيْظُومُ وَاللَّيْظُومُ وَاللَّيْظُومُ وَاللَّيْظُومُ

ظِلْمَاتُ الْوَيْحِ وَاللَّيْظُومُ وَاللَّيْظُومُ وَاللَّيْظُومُ وَاللَّيْظُومُ وَاللَّيْظُومُ وَاللَّيْظُومُ

## *DEDICATION*

*To who had taught me the patience and success, my **father***

*To my **mother** with my endless love and fidelity*

*To my best companion and inspiration my **wife***

*To my support my **brothers** and **sisters***

*To my life flowers my **children***

*To my **teachers** who had taught me*

*To all those who taught me and encouraged me*

*To the homeland of the brave and the source of men **Iraq***

*Maan Hatam Saeed*

*2017*

## **ACKNOWLEDGEMENTS**

*In the name of **Allah**, the most gracious, the most merciful. I thank **Allah** before anyone, who enabled me to achieve this research.*

*To who led the message and advised the nation to the Prophet of Mercy and the light of the worlds Prophet **Muhammad**, peace be upon him.*

*I would like to express my gratitude and appreciation to my supervisor **Asst. Prof. Dr. Ali Laftah Abbas** who has guided and supported me throughout my higher academic study at the Department of civil engineering. Not only has he provided generously his valuable time and professional guidance as an academic supervisor for my thesis study, but he has also been a mentor and a brother. I am also grateful to the Dean of the Faculty of Engineering, the head of the Department of the civil engineering, the coordinator of graduate studies.*

*I am equally grateful to all the staff of civil engineering for their encouragement and the feelings of brotherhood they hold for me. Also, I would like to express my gratitude the staff of Structural Engineering Laboratory.*

**Maan Hatam Saeed**

**2017**

**ABSTRACT**  
**ANALYSIS OF MASONRY BUILDINGS EXPOSED TO**  
**EARTHQUAKE WITHIN IRAQI ZONES**

**By**

**Maan Hatam Saeed**

**Supervised by**

**Assist. Prof. Dr. Ali Laftah Abbas**

Masonry is considered as the oldest construction material still being used in nowadays construction. However, masonry building shows great sensitivity to the impact of earthquakes. Since most of the typical residential houses buildings in Iraq were designed using outdated building codes that did not account for horizontal seismic loads where only vertical loads were considered, it became necessary to introduce earthquake loads in the designs of these buildings. Due to the increase in seismic impact on Iraq in recent times, so it is important to study the behavior of the masonry building under the influence of earthquakes in order to assess the seismic performance and identify the weakness of this type of construction. This study focuses on assessing the seismic performance of residential buildings scattered throughout Iraq, which is subjected to seismic action.

In this research a three-dimensional finite element model using ABAQUS 6-13 program was developed to represent, simulation and analysis of residential masonry buildings generally constructed in Iraq cities. The verification is carried out with two experimental models. The first verification done to select the best technique for modeling the masonry wall is by representing it in three techniques(micro modeling, simplified micro modeling, and macro modeling) where the macro modeling has proved its efficiency to modeling large models. The second verification is done with masonry room under the dynamic load was adopting macro modeling which has also close convergence for the simulation results to the

experimental data. In this study, a single room and three typical houses are simulated with the total dimension (5 x 20 m, 10 x 10 m, 10 x 18 m) for one and two stories depends on the nonlinear behavior of the material and the nonlinear dynamic procedure (time history) in the analysis. The compressive strength of the masonry wall  $f_m$  and nonlinear properties of the materials that are used in this study were obtained by testing samples in the laboratory which are used as an input data in the ABAQUS 6-13 program. Through the results of the prism tests of the masonry wall models, an equation is concluded to find the compressive strength of the masonry wall consisted of Iraqi building materials by using Artificial Neural Network (AAN).

The design spectral responses acceleration parameters of the earthquake are adopted as 0.5g according to Iraqi zone. Two different acceleration is implemented, separately. El Centro earthquake happened in Southern California in 1940 with a magnitude of  $M_w=5.4$  (peak ground acceleration  $PGA=3.50 \text{ m/sec}^2$ ) and Ali Al- Garbi earthquake happened in Maysan Province south of Iraq in 2012 with a magnitude  $M_w=4.9$  (peak ground acceleration  $PGA=1.04 \text{ m/sec}^2$ ) are used as the input ground motion in this study. The involved result parameters are the maximum displacement, drift, and base shear which are compared with the requirements of seismic demand by the preliminary draft of Iraqi code and ASCE Standard ASCE/SEI 7-10. The results show that the models prove efficiency and stability against the effect of earthquakes, especially when the load is applied in the Z (long direction) more than the load applied in the X (short direction) for all models. On the other hand, when the EL Centro earthquake load is applied on the models, the maximum displacement increased by 6-12%, drift increased by 22-29% and base shear increased by 29-32.96% more than when the Ali Al-Garbi earthquake load is applied on the models.

## TABLE OF CONTENTS

Subject	Page No.
Dedication	
Acknowledgement	
Abstract	I
Table of Contents	III
List of Figures	V
List1 of Tables	IX
List of Symbols and Abbreviations	X
<b>CHAPTER ONE INTRODUCTION</b>	
1.1 General	1
1.2 Types of masonry walls	2
1.3 Masonry brick walls in Iraq	3
1.4 Earthquake and Hazard Consideration in Iraq	3
1.4.1 Earthquake	3
1.4.2 Hazard Earthquake in Iraq	5
1.5 Research Justification	8
1.6 Aim and Scope of Study	8
1.7 Layout of the Thesis	8
<b>CHAPTER TWO LITERATURE REVIEW</b>	
2.1 Introduction	10
2.2 Masonry	10
2.2.1 Brick masonry units	10
2.2.2 Cement Mortar	12
2.3 Masonry bearing wall	12
2.4 Investigation of seismic effect of the masonry bearing wall	15
2.5 Concluded Remarks	22
<b>CHAPTER THERR METHODOLOGY OF ANALYSIS</b>	
3.1 Introduction	24
3.2 Method of analysis	24
3.3 Types of Nonlinearities	25
3.4 Types of Modeling Technique for Masonry	25
3.4.1 Micro-modeling	26
3.4.2 Simplified micro-modeling	27
3.4.3 Macro-modeling	27
3.5 Finite element representation of ABAQUS Program	28
3.5.1 Modeling of Masonry bearing wall and reinforcement concrete slab in ABAQUS	28
3.5.1.1 Brick element C3D8	29
3.5.1.2 Truss element T3D2	30
3.5.2 Types of Constraints & Interface	30
3.5.2.1 Constraints	30
3.5.2.2 Interface elements	31
3.5.3 Concrete damaged plasticity model (CDP) in ABAQUS	32

3.5.4 Mechanical behavior	33
3.5.4.1 Uniaxial tension and compression stress behavior	33
3.5.5 Shape Function of 8-Node Brick Element (C3D8)	35
3.6 Masonry Properties	40
3.7 Dynamic load (time history)	42
3.7.1 Earthquake Ground Motion	46
3.7.2 Calculation of Seismic Demand	48
3.7.3 The lateral displacement or drift	53
3.8 Creating and analyzing a model using the ABAQUS	55
<b>CHAPTER FOUR EXPRIMENTAL WORK</b>	
4.1 General	57
4.2 Laboratory tests	57
4.2.1 Brick	57
4.2.2 Mortar	61
4.2.3 Water	64
4.2.4 Mixing of mortar	64
4.2.5 Compressive strength of masonry	66
4.3 Masonry wall equation by using Artificial neural networks (AAN)	71
<b>CHAPTER FIVE RESULTS AND DISCUSSION</b>	
5.1 Introduction	75
5.2 Verification of The Numerical Model	75
5.2.1 Verification No One (Vermelfoort and Raijmakers wall)	75
5.2.1.1 Results and Analysis	78
5.2.2 Verification No Two (V. G. Srisanthi room)	79
5.2.2.1 Results and Analysis	80
5.3 Seismic Evaluation of Masonry bearing wall Buildings	81
5.3.1 Case Study No.1 (single room)	82
5.3.1.1 Results and Analysis	83
5.3.2 Case Study No 2 (Masonry house 10*10 m)	89
5.3.2.1 Results and Analysis	91
5.3.3 Case Study No 2 (Masonry house 5*20 m)	101
5.3.3.1 Results and Analysis	102
5.3.4 Case Study No 3 (Masonry house 10*18 m)	112
5.3.3.1 Results and Analysis	114
<b>CHAPTER SIX CONCLUIONS AND RECOMMENDATIONS</b>	
6.1 Conclusions	125
6.2 Recommendations for future studies	127
REFERENCES	128



## LIST OF FIGUURES

Figure No.	Figure Title	Page No.
<b>Figure(1.1)</b>	Oldest masonry construction cities	1
<b>Figure(1.2)</b>	Definitions focus and epicenter pointes	4
<b>Figure(1.3)</b>	P &S waves	5
<b>Figure(1.4)</b>	L&R waves	5
<b>Figure(1.5)</b>	Collapse of main walls and roof masonry house in AL Rafae, Iraq in 2004)( ISN,2004).	6
<b>Figure(1.6)</b>	Earthquakes of 2015 in Iraq and neighboring areas(ISN,2016)	7
<b>Figure(3.1)</b>	Modeling of masonry wall: (a) masonry sample, (b) micro-modeling , (c) simplified micro-modeling , (d) macro-modeling	26
<b>Figure(3.2)</b>	(a) the micro-modeling , (b) simplified of micro-modeling , (c) macro-modeling	27
<b>Figure(3.3)</b>	Name of C3D8 in ABAQUS	29
<b>Figure(3.4)</b>	C3D8 brick reduced	29
<b>Figure(3.5)</b>	T3D2 linear truss 2-node element	30
<b>Figure(3.6)</b>	Response off masonry too uniaxial loading in tension (a) and compression (b)	35
<b>Figure(3.7)</b>	8- Node Isoperimetric Solid Element	35
<b>Figure(3.8)</b>	North -South acceleration components of the El Centro 1940	43
<b>Figure(3.9)</b>	Ali Al-Gharbee earthquakes in Iraq 2012	43
<b>Figure(3.10)</b>	Idealized Frame Structure (a) applied force p(t); (b) Earthquake Ground Motion	46
<b>Figure(3.11)</b>	Free-Body Diagram	47
<b>Figure(3.12)</b>	Effective Earthquake Force	48
<b>Figure(3.13)</b>	Maximum considered earthquake spectral response accelerations acceleration for short period $S_s$	50
<b>Figure(3.14)</b>	Definition of drift	54
<b>Figure(3.15)</b>	Flow Chart for Model by ABAQUS.	56
<b>Figure(4.1)</b>	Compressive strength test of brick	58
<b>Figure(4.2)</b>	a)drying samples b) flooded samples c)Measured mass of samples	59
<b>Figure(4.3)</b>	The efflorescence	60
<b>Figure(4.4)</b>	Al-Douz graded natural sand	63
<b>Figure(4.5)</b>	Casting of cubes	65
<b>Figure(4.6)</b>	Compressive strength test of mortar	66
<b>Figure(4.7)</b>	Compressive Strength of masonry	67
<b>Figure(4.8)</b>	Masonry prisms	67
<b>Figure(4.9)</b>	Strain gauge	68
<b>Figure(4.10)</b>	compressive test of masonry prisms	69
<b>Figure(4.11)</b>	Stress-Strain Curves for Masonry Prism	70
<b>Figure(4.12)</b>	The structural of the ANN system	73

<b>Figure(4.13)</b>	Comparison of laboratory test results and results of neural network networks(ANN)	73
<b>Figure(5.1)</b>	The masonry wall with a central opening and Testing procedure	76
<b>Figure(5.2)</b>	Finite element modeling for masonry wall and mesh a)micro modeling b) simplified micro modeling c) macro modeling	77
<b>Figure(5.3)</b>	The simulations results of three Strategies of masonry wall by using ABAQUS 6.13 program a) micro b) simplified micro c) macro.	78
<b>Figure(5.4)</b>	Load- displacement of the masonry wall	79
<b>Figure(5.5)</b>	single room model and shake table	80
<b>Figure(5.6)</b>	a) Simulation of the of single room by using ABAQUS 6.13 program, b) The maximum displacement of experimental and 3D finite element model .	81
<b>Figure(5.7)</b>	The details and finite element idealization of a single room model(a) The details and dimension(b) Finite element idealization.	82
<b>Figure(5.8)</b>	Deformation shapes of the single room model for El Centro earthquake	84
<b>Figure(5.9)</b>	Deformation shapes of the single room model for Ali Al-Garbi earthquake	85
<b>Figure(5.10)</b>	The maximum displacement curves of single room model	86
<b>Figure(5.11)</b>	The story drift curves of single room model	86
<b>Figure(5.12)</b>	The single room model results displacement, drift and base shear of a) El Centro earthquake. b) Ali Al-Garbi earthquake.	88
<b>Figure(5.13)</b>	Comparison of single room model results displacement, drift and base shear of El Centro and Ali Al-Garbi earthquakes.	89
<b>Figure(5.14)</b>	MHS1 with 10m*10m plan.	90
<b>Figure(5.15)</b>	Finite element idealization a) MHS1 one storey b) MHS1 two storey	90
<b>Figure(5.16)</b>	Deformation shapes of MHS1 one storey for El Centro earthquake	91
<b>Figure(5.17)</b>	Deformation shapes of MHS1 one storey for Ali Al-Garbi earthquake	91
<b>Figure(5.18)</b>	Deformation shapes of MHS1 two storey for El Centro earthquake	92
<b>Figure(5.19)</b>	Deformation shapes of MHS1 two storey for Ali Al-Garbi earthquake.	92
<b>Figure(5.20)</b>	The maximum displacement curves of MHS1 one storey	93
<b>Figure(5.21)</b>	The maximum displacement curves of MHS1 two storey	94
<b>Figure(5.22)</b>	The story drift curves of the MHS1 one storey	95
<b>Figure(5.23)</b>	The story drift curves of the MHS1 two storey	95
<b>Figure(5.24)</b>	MHS1one storey model results displacement, drift and base shear of a) El Centro earthquake. b) Ali Al-Garbi earthquake.	98
<b>Figure(5.25)</b>	MHS1two storey model results displacement, drift and base shear of a) El Centro earthquake. b) Ali Al-Garbi earthquake.	98
<b>Figure(5.26)</b>	Comparison of MHS1 one storey model results displacement, drift and base shear of El Centro and Ali Al-Garbi earthquakes.	100
<b>Figure (5.27)</b>	Comparison of MHS1 two storey model results displacement, drift and base shear of El Centro and Ali Al-Garbi earthquakes.	100
<b>Figure ( 5.28)</b>	MHS2 with 5m*20m plan.	101
<b>Figure (5.29)</b>	Finite element idealization a) MHS2 one storey b) MHS2 two story	102
<b>Figure (5.30)</b>	Deformation shapes of MHS2 one storey for El Centro earthquake	102

<b>Figure (5.31)</b>	Deformation shapes of MHS2 one storey for Ali Al-Garbi earthquake	103
<b>Figure (5.32)</b>	Deformation shapes of MHS2 two storey for El Centro earthquake	103
<b>Figure (5.33)</b>	Deformation shapes of MHS2 two storey for Ali Al-Garbi earthquake	104
<b>Figure (5.34)</b>	The maximum displacement curves of MHS2 one storey	105
<b>Figure (5.35)</b>	The maximum displacement curves of MHS2 two storey	106
<b>Figure (5.36)</b>	The story drift curves of the MHS2 one storey	106
<b>Figure (5.37)</b>	The story drift curves of the MHS2 two storey	107
<b>Figure(5.38)</b>	MHS2 one storey model results displacement, drift and base shear of a) El Centro earthquake. b) Ali Al-Garbi earthquake.	110
<b>Figure(5.39)</b>	MHS2 two storey model results displacement, drift and base shear of a) El Centro earthquake. b) Ali Al-Garbi earthquake.	110
<b>Figure (5.40)</b>	Comparison of MHS2 one storey model results displacement, drift and base shear of El Centro and Ali Al-Garbi earthquakes.	112
<b>Figure (5.41)</b>	Comparison of MHS2 two storey model results displacement, drift and base shear of El Centro and Ali Al-Garbi earthquakes.	112
<b>Figure (5.42)</b>	MHS3 with 10m*18m plan.	113
<b>Figure (5.43)</b>	Finite element idealization a) MHS3 one storey b) two storey	114
<b>Figure (5.44)</b>	Deformation shapes of MHS3 one storey for El Centro earthquake	114
<b>Figure (5.45)</b>	Deformation shapes of MHS3 one storey for Ali Al-Garbi earthquake	115
<b>Figure (5.46)</b>	Deformation shapes of MHS3 two storey for El Centro earthquake	115
<b>Figure (5.47)</b>	Deformation shapes of MHS3 two storey for Ali Al-Garbi earthquake	116
<b>Figure (5.48)</b>	The maximum displacement curves of MHS3 one storey	117
<b>Figure (5.49)</b>	The maximum displacement curves of MHS3 two storey	118
<b>Figure (5.50)</b>	The story drift curves of the MHS3 one storey	118
<b>Figure (5.51)</b>	The story drift curves of the MHS3 two storey	119
<b>Figure(5.52)</b>	MHS3 one storey model results displacement, drift and base shear of a) El Centro earthquake. b) Ali Al-Garbi earthquake.	122
<b>Figure(5.53)</b>	MHS3 two storey model results displacement, drift and base shear of a) El Centro earthquake. b) Ali Al-Garbi earthquake.	122
<b>Figure (5.54)</b>	Comparison of MHS3 one storey model results displacement, drift and base shear of El Centro and Ali Al-Garbi earthquakes.	124
<b>Figure (5-55)</b>	Comparison of MHS3 two storey model results displacement, drift and base shear of El Centro and Ali Al-Garbi earthquakes.	124

## List of Table

Table No.	Table Title	Page No.
<b>Table (3-1)</b>	Elements description in ABAQUS	30
<b>Table (3-2)</b>	Value of constants $K$ , $\alpha$ and $\beta$	41
<b>Table (3-3)</b>	Richter magnitude and its effects( <b>Datta,2010</b> )	44
<b>Table (3-4)</b>	Modified Mercalli intensity (MMI) scale ( <b>Datta,2010</b> )	45
<b>Table (3-5)</b>	Occupancy Category of buildings and other structures for flood ,wind, snow, earthquake and ice load (ASCE/SEI 7-05)	51
<b>Table (3-6)</b>	Importance factor $I_E$	52
<b>Table (3-7)</b>	Site coefficient $f_a$	52
<b>Table (3-8)</b>	Allowable story drift	54
<b>Table (4-1)</b>	Compressive strength of brick	58
<b>Table (4-2)</b>	The general evaluation of samples of brick and the classification according to the Iraqi standard specifications No. 25 of 1988	61
<b>Table (4-3)</b>	Physical properties of the cement	62
<b>Table (4-4)</b>	Chemical composition and main compounds of the cement	62
<b>Table (4-5)</b>	Grading off fine aggregate	63
<b>Table (4-6)</b>	Physical properties of fine aggregate.	64
<b>Table (4-7)</b>	Compressive strength of mortar	65
<b>Table (4-8)</b>	Compressive strength of masonry prisms	70
<b>Table (4.9)</b>	stress–strain curves of masonry prisms	70
<b>Table (4-10)</b>	The result of analysis of masonry wall data	74
<b>Table(5-1)</b>	Properties of masonry wall	77
<b>Table(5-2)</b>	Room material properties	80
<b>Table(5-3)</b>	Material properties	83
<b>Table(5-4)</b>	Ultimate capacity of single room versus seismic demand	87
<b>Table(5-5)</b>	Ultimate capacity of the MHS1one storey and two storey model versus seismic demand	96
<b>Table(5-6)</b>	Ultimate capacity of the MHS2one storey and two storey model versus seismic demand	108
<b>Table(5-7)</b>	Ultimate capacity of the MHS3one storey and two storey model versus seismic demand	120

## LIST OF SYMBOLS AND ABBREVIATIONS

SYMBOLS	DEFINITION
$\{a\}$	The nodal displacements vector.
$[B]$	Strain displacement matrix.
$[C]$	Damping matrix.
$C_s$	Seismic response coefficient.
$[D]$	Constitutive matrix.
$d$	Vector of displacements in B due to the initial strains and stresses.
$d_t$	Tensile cohesion stresses (MPa).
$d_c$	Compressive cohesion stresses (MPa).
$E$	The Young's modulus (MPa).
$E_0$	The initial (undamaged) elastic stiffness of the material (MPa).
$E_m$	Modulus of elasticity of masonry (MPa).
$E_b$	Modulus of elasticity of brick (MPa).
$E_j$	Modulus of elasticity of mortar (MPa).
$E_s$	Modulus of elasticity of steel (MPa).
$F$	External load vector (kN).
$f_b$	Ultimate compressive strengths of brick in (MPa).
$f_m$	Ultimate compressive strength of a masonry prisms in (MPa) .
$f'_m$	Ultimate compressive strength of a masonry prisms in horizontal direction in (MPa)
$f_j$	Ultimate compressive strength of mortar in (MPa).
$f_s$	Yield stress of steel in (MPa).
$f_t$	The tensile strength of masonry in (MPa).
$f_a$	Site coefficients.
$f_D$	The damping force (kN).
$f_I$	The inertia force (kN).
$f_s$	The elastic resisting forced (kN).
$G_b$	Shear modulus's of brick (MPa).
$G_j$	Shear modulus's of mortar (MPa).
$g$	Ground accelerations (m/sec <sup>2</sup> )
$H$	Height of building (mm).
$h_n$	Height of story (mm).
$h_{sx}$	The story height below the Level X (mm).
$I_E$	Seismic importance factor
$[J]$	Jacobian matrix.
$[K]$	Stiffness matrix.
$[K]^e$	Element stiffness matrix.
$k_c$	Ratio of second stress invariant
$k_n, k_s, k_t$	Normal and shear direction .
$k$	Constant .
$L$	Love wave.
$[M]$	Mass matrix.
$m$	Mass (kg).
$[N]$	Shape functions matrix.
$N_i$	Shape function at the i-th node.
$P$	Longitudinal wave.
$R$	Rayleigh wave.
$R$	Response modification factor.
$S$	Transverse wave.
$S_s$	Mapped maximum considered earthquake spectral accelerations for short periods determined for seismic map for Iraq.

$S_{Ds}$	Design spectral response acceleration parameter for short period.
$S_{Ms}$	Mapped maximum considered earthquake spectral accelerations for short periods adjusted for site class effect.
$S_{D1}$	The design spectral response acceleration at 1-second period
T	The fundamental period of the building (sec).
t	Time(sec).
$t_m$	Thickness of mortar bed joint (mm).
u	The inter-floor ( or relative) displacement (mm).
$\dot{u}$	The relative velocity (m/sec).
$\ddot{u}$	The relative accelerations (m/sec <sup>2</sup> )
u,v,w	Displacement components in x,y and z coordinates.
W	Effective seismic weight (kN).
V	Seismic base shear (kN)..
X,Y,Z	Global coordinate.
<b>GREEK SYMBOL</b>	
$\sigma$	Stress (MPa).
$\sigma_t$	Tensile strength (MPa).
$\sigma_c$	Compressive strength (MPa).
$\varepsilon$	Strain.
$\varepsilon_t^{\sim pl}, \varepsilon_c^{\sim pl}$	Tension and Compression equivalent plastic strains
$\dot{\varepsilon}_t^{\sim pl}, \dot{\varepsilon}_c^{\sim pl}$	Tension and Compression equivalent plastic strain rates
$\gamma$	Shear strain.
$\mu_o$	The viscosity parameter
$\nu$	Poisson ratio.
$\varepsilon$	The flow potential eccentricity.
$\psi$	The dilation angle.
$\beta$	Constant.
$\alpha$	Constant.
$\xi, \eta, \zeta$	The natural coordinates.

ABBREVIATIONS	DEFINITION
ASCE	American Society of Civil Engineers.
ASTM	American Society for Testing and Materials.
NDL	Nonlinear Dynamic Load.
NSL	Nonlinear Static Load.
LDL	Linear Dynamic Load .
LSL	Linear Static Load.
URM	Unreinforced masonry.
FEM	Finite element method.
MW	Masonry wall.
PGA	Peak ground acceleration.
UNW	Unreinforced masonry wall.
CDP	Concrete damage plasticity.
ANN	Artificial Neural Network .
FEA	The finite element analysis.
LSP	linear static procedure.
NSP	Nonlinear static procedure.
LDP	linear dynamic procedure.
NDP	Nonlinear dynamic procedure.

MHS1	Masonry house structure with 10m x 10m plan.
MHS2	Masonry house structure with 5m x 20m plan.
MHS3	Masonry house structure with 10m x 18m plan.

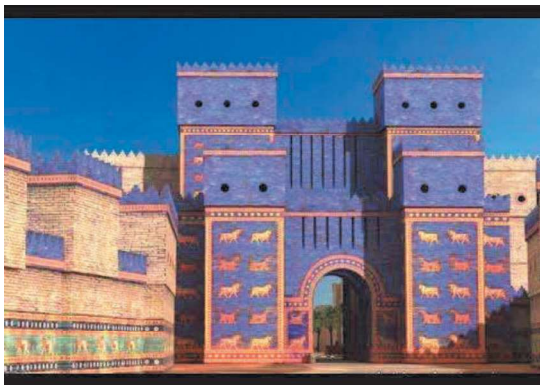
# CHAPTER ONE

## INTRODUCTION

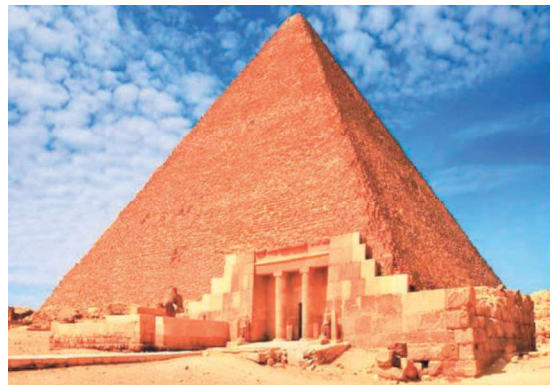
### 1.1 General

The type of construction that consists of the constructional units and mortar as the joining material is known as (masonry), furthermore, the constructional units may be bricks, concrete blocks, stones , granites, marbles. The mortar is a mixture of water and any bound material like (sand, cement), gypsum and clay.

Masonry is considered the oldest construction material type that still to be used in constructions until these days. In the old ages, stone , clay brick and sliced stone were used as the masonry units ,as in the ancient city of Babylon (Iraq) and Great Pyramid of Giza (Egypt) as shown in Figure (1-1). All these old constructions built in the old ages and still stand in nowadays after several natural disasters as devastating earthquakes. However, many of those old buildings subjected to the earthquakes over the past years unable to withstand seismic excitation, such Iskenderun Lighthouse and old citadel of Bam (Costa,2007).



a) Babylon(Iraq)



b) Great Pyramid of Giza (Egypt)

**Figure (1-1)** Oldest masonry construction cities(Costa,2007).

The most important properties of masonry construction building are plains. The skills and materials which are required to build masonry are



great available. Therefore, it is possible to begin masonry work almost instantly. The other substantial characteristic is the acceptable appearance, strength, toughness, low repair cost, sound absorption, versatility and fire resistance. The examples of buildings that resist wind and seismic loads are bearing walls of a building having few stories, the masonry wall system demonstrates competitive performance with other building systems like steel and concrete frame. However, the use of masonry construction hampered by the development of design rules compared with other systems such as concrete and steel. A few models in the literature illustrates the complex interaction behavior of masonry components dictates lack of insightfulness of the system **(Lourenço,1997)**.

During the recent years, the attention is focused on masonry increasingly due to the development of modern technologies of research and software engineering and the growing knowledge of the behavior request, especially regarding earthquakes. The wide spread of masonry buildings, the heritage buildings, residential buildings and government buildings such as schools, hospitals, etc., especially in countries with seismic action dictates to expand the scope of knowledge in theoretical, numerical and experiential research to evaluate the seismic performance of masonry buildings and to diagnose the weakness of masonry buildings for processing. A series of analytical programs and methods are used exclusively for concrete and steel structures for several years used now to analyze masonry building structures **(Parisi, 2010)**.

## **1.2 Types of masonry walls**

Masonry wall is a construction composed of individual units of construction and connecting with each other by mortar. The strength of the masonry wall can be affected by several factors, such as the type of the masonry units, the strength of the masonry units, type of the masonry units connected, the thickness of the masonry wall and the strength of the

mortar. Masonry walls are mainly classified into two categories (Rana ,2008):

- 1- Bearing masonry walls:- There are walls designed to transport the dead and live loads to the base(foundation) and can be external or internal walls .
- 2- Non-Bearing masonry walls:- There are walls designed to carry its weight and the weight of cladding attached, its used as internal partitions or architectural walls .

### **1.3 Masonry brick walls in Iraq**

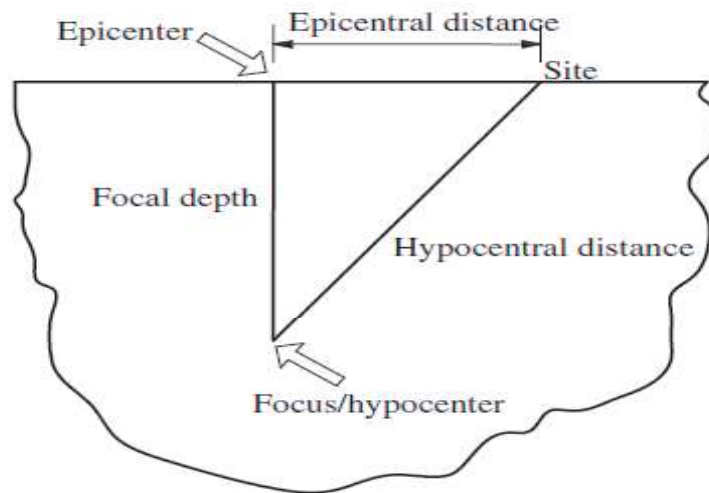
Advantages of masonry such as to decrease cost, the speed of delivery, date of heritage masonry building use in Iraq and many others advantages dictate to spread this system of construction in residential houses, government buildings, schools and hospitals, where mostly used as bearing masonry walls in residential homes, hospitals, government buildings and in one or two floors where using as non-bearing walls on the internal partitions and external wall without direct loads with frame concrete in multi-story buildings is limited. The use of bearing masonry walls in all of Iraq's provinces, especially in residential buildings forms a large proportion up to more than 80% with the presence of seismic action dilation with time in Iraq dictates the great importance of this study which identifies the behavior of the walls under the influence of earthquakes(Oti,2009).

### **1.4 Earthquake and Hazard Consideration in Iraq**

#### **1.4.1 Earthquake**

Earthquakes are natural phenomena that shake the surface of the earth resulting from the sudden release of the energy in the rocks of the soles earth where this energy creates seismic waves spreading from the ground or in a sense from the center of the earthquake (focus) to the surface of the earth and these waves are spread in all directions to the

surface. The point vertically above the focus on the surface of earth is epicenter, the distance between the focus and epicenter called focal depth as shown in Figure (1-2) the focal depth of the earthquake is important to determine the potential of the earthquake as most of the earthquakes have a focal depth of less than 70 km More harmful. Earth affected by the focus of earthquake is called the focal zone. Foreshocks are defined as shocks occurs before the earthquake (main shock). Aftershocks are those that occurs after the main shock **(Dhanaji,2011)**.



**Figure (1-2) Definitions focus and epicenter points(Dhanaji ,2011)**

Seismic waves propagate in all directions from the center of the earthquake, the energy carrier from one point to another through the layers and finally carry the energy to surface , during the transmission of waves within the layers of the earth it is called body waves and when they reach the surface of the earth it is called surface waves . Body waves , which is of two types P and S wave, where P are longitudinal waves in the direction of particle movement or the opposite direction as shown in Figure (1-3). The S waves are transverse in which the motion of the particles is vertically in the wave propagation direction as shown in Figure (1-3) **(Dhanaji ,2011)**.

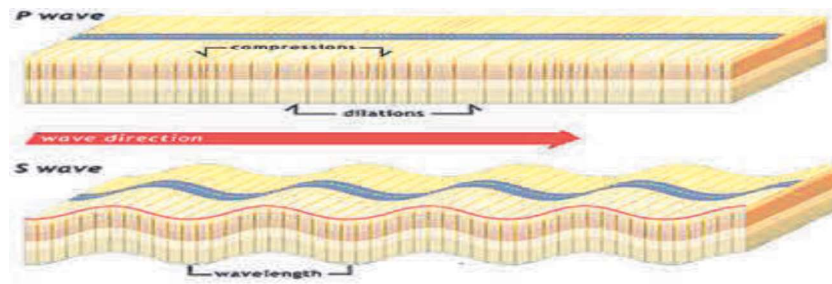


Figure (1-3) P & S waves (Datta,2010)

Surface waves are spread on the surface of the earth and are classified on two types L and R waves. L waves ( Love waves), it is characterized by particle movement at the horizontal plane and to be transverse to the direction of propagation as shown in Figure(1-4) , L wave faster than R as it is the first seismic wave arriving on the monitoring station. R waves ( Rayleigh waves), it is characterized by particle movement in a vertical plane and traces an elliptical path, which is retrograde to the direction of waves propagation as shown in Figure(1-4) (Datta,2010).

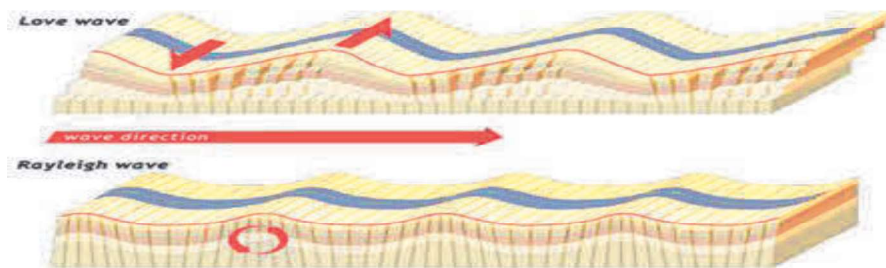


Figure (1-4) L&R waves (Datta,2010)

### 1.4.2 Hazard Earthquake in Iraq

Many of seismic and seismic - tectonic studies in Iraq indicate that seismic effect is moderate to high in the northern and north-eastern borders, and low in the south and south-west direction (Alsinawi,2002). Seismic effect in Iraq is directly related to the general trend in the alpine belt seismic activity on the global scale. While the seismic activity locally

crosses the line from the epicenter often associated with the structures observed easily intercept the North-West direction from the orientation area Zagross, and is associated with major faults trending north in areas north latitude  $34^{\circ}$  N. The depth of foci for most of the shocks recorded in Iraq range between 5 -50 km. This means that most of the events with depth ( $h < 20$  km) originated in the upper crust which is characterized by large fracturing and heterogeneity (Alridha,2013).

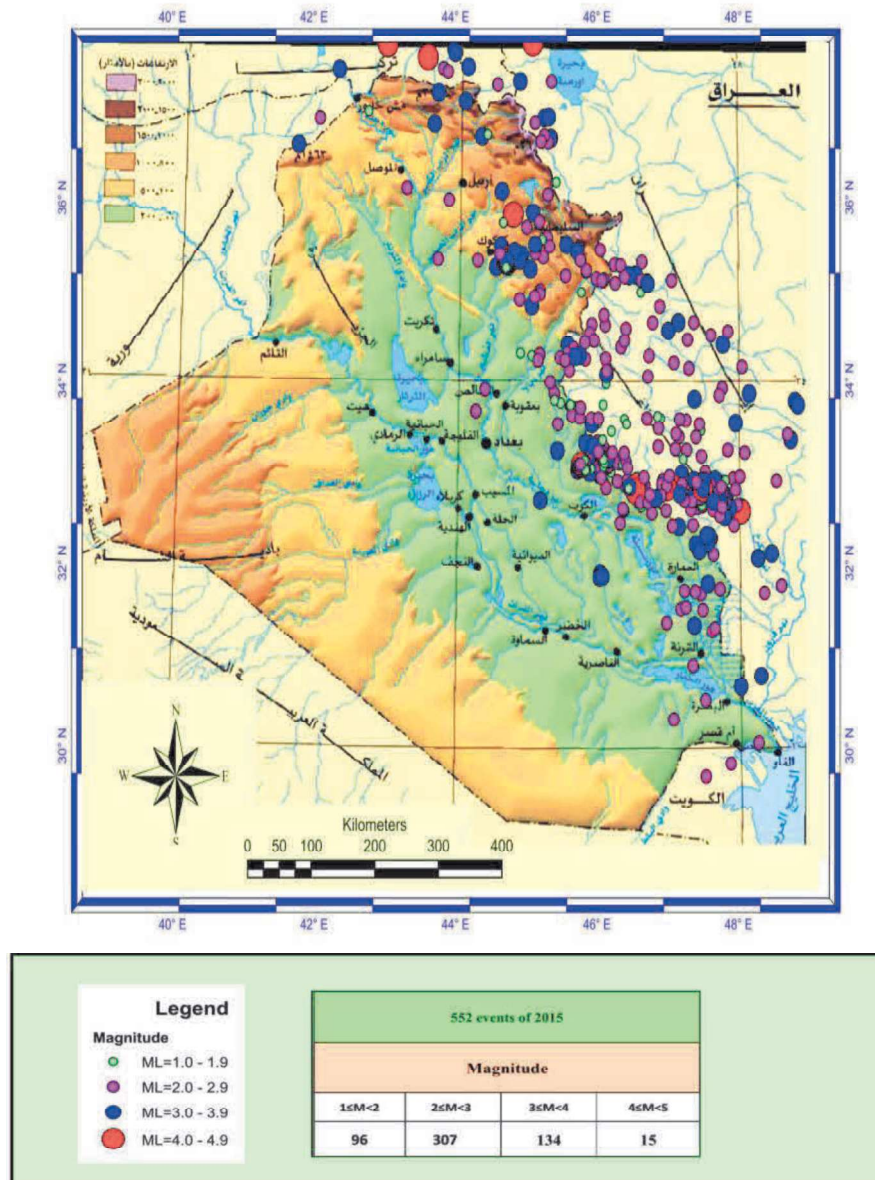
After 1900, the earthquakes in Iraq were well known and magnitudes ranged from  $M_w=2.6$  to  $M_w=7.1$  in the geo-seismic map of Iraq's borders. the earthquake center suffered shocks suffered by Iraq after 1900, as follows (Alridha,2013):-

- 1- At 17/10/1946, 1/ 1/1950 and March 1956 Baghdad stroked by strong earthquakes causing significant property damage.
- 2- In 1992, the village Kasimiyah. 50 km east of Arbil earthquakes destroyed dozens of homes but did not record any deaths.
- 3- August 2004, earthquakes stroked southern Iraq in the district AL - Rafee has many houses collapsed Figure (1-5)( ISN,2004).
- 4- In 2012 earthquakes stroked district Ali al-Gharbi, north of Al-Amara governorate which affected strongly by  $M_w=4.9$  on the Richter scale, its data are used in this study (ISN,2016).



**Figure(1-5)** Collapse of main walls and roof masonry house in AL Rafee, Iraq in 2004)( ISN,2004).

Iraq meteorological organizational and Seismology recorded (552) earthquakes in 2015 in Iraq and its neighboring areas as shown in Figure (1-6), thereof (120) shake inside of Iraq and (432) in border areas of neighboring countries and has some parts of Iraq witnessed seismically active noticeable during this period was the number of ground tremors, some of which were significant(10) and other were insignificant (ISN,2016).



Figure(1-6) Earthquakes of 2015 in Iraq and neighboring areas(ISN,2016)

## 1.5 Research Importance

The importance of the study is concentrated on the following :-

- 1- Since most of the Iraqi buildings are considered masonry construction which is accounted up 80% of the buildings at last, it is necessary to study their behavior under the influence of earthquakes.
- 2- Increase the impact of earthquakes on Iraq in the recent years generated, great importance to studying this topic.
- 3- The lack of studies concerned with the impact of earthquakes in Iraq in in encourages researcher to cover this topic.

## 1.6 Aim and Scope of Study

The main objective of this study is to investigate and evaluate the seismic performance of masonry wall buildings behavior in Iraq under the earthquak load. The 3D finite element method is used for the modeling and analysis. The nonlinear material and nonlinear dynamic analysis (Time-History) are conducted by using the computer program ABQUS 6.13. In this study various models of residential masonry building including one room, one storey and two stories house with different plans. The study considered two earthquakes action in X-axis and Z-axis of every models with different intensity earthquake load.

## 1.7 Layout of the Thesis

This thesis consists of six chapters :-

- 1- Chapter one contains an introduction to the history of masonry wall and the hazard of earthquakes on masonry wall in Iraq.
- 2- Chapter two contains a brief review of experimental and analytical studies carried out on masonry wall under seismic loads.
- 3- Chapter three shows the finite element modeling used ABAQUS program of the masonry wall and the nonlinear solution techniques.

- 4- Chapter Four deals with experimental tests of the compressive strength of the masonry wall and its component materials (brick, mortar).
- 5- Chapter Five presents the applications, results, and discussion.
- 6- Chapter Six gives the main conclusions and recommendation for future work.